

SECTION 21, T.7N., R.3E., S.L.B. & M.

IN WEBER COUNTY

SCALE 1" = 400'

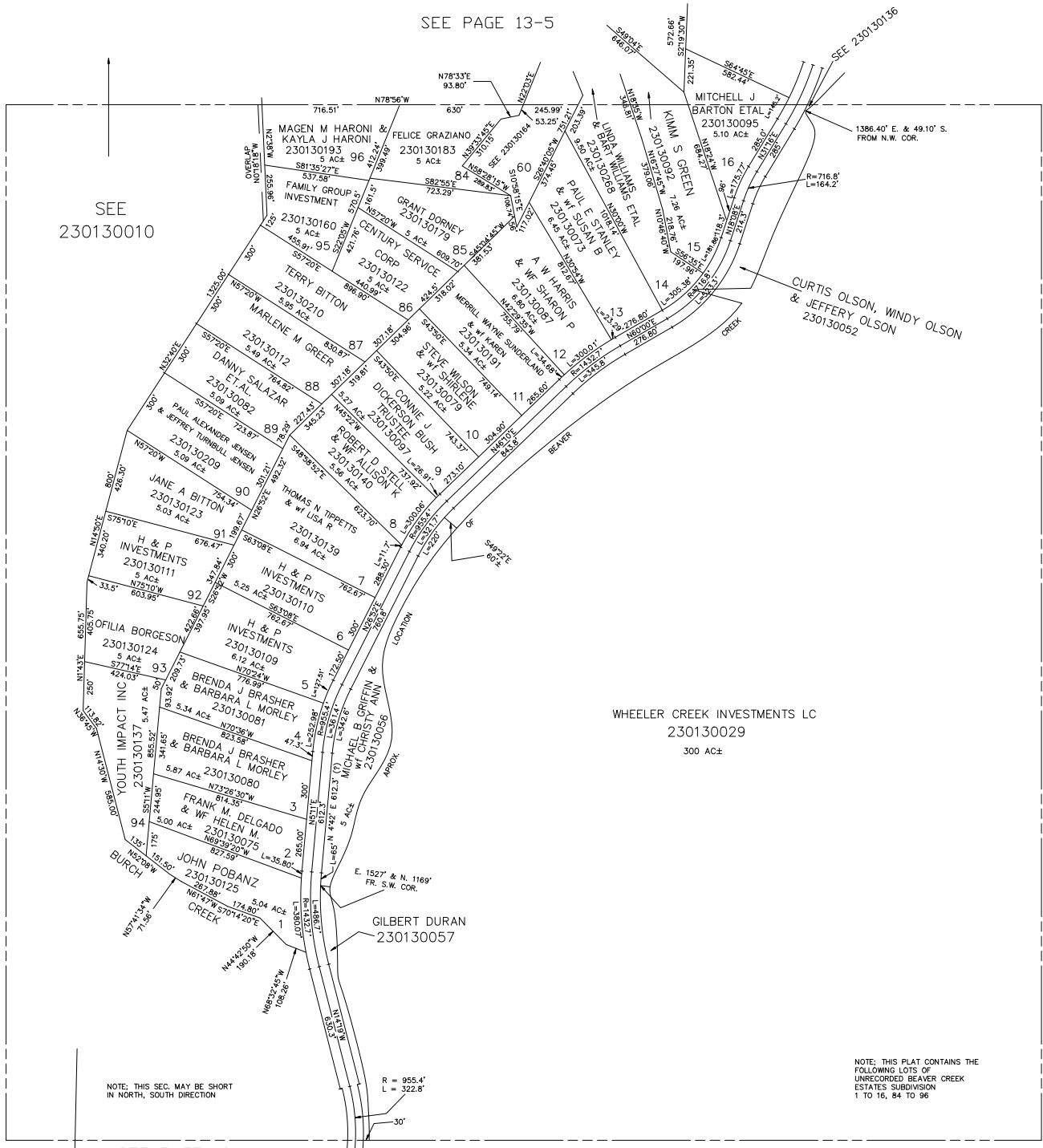
TAXING UNIT: 520

SEE PAGE 13-5

SEE
230130010

SEE PAGE 13

SEE PAGE 13



NOTE: THIS SEC. MAY BE SHORT IN NORTH, SOUTH DIRECTION

R = 955.4'
L = 322.8'

NOTE: THIS PLAT CONTAINS THE FOLLOWING LOTS OF UNRECORDED BEAVER CREEK ESTATES'S SUBDIVISION 1 TO 16, 84 TO 96

SEE PAGE 16

SEE PAGE 13